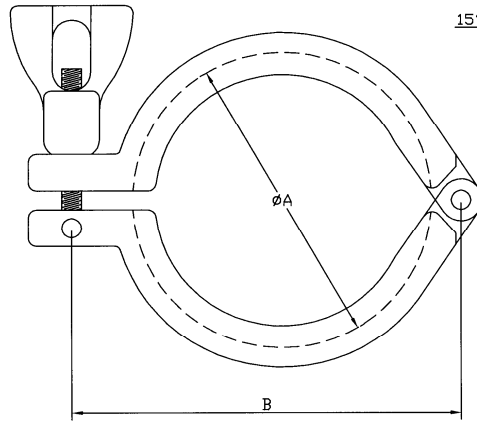
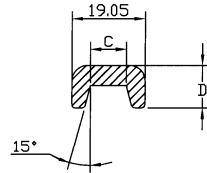
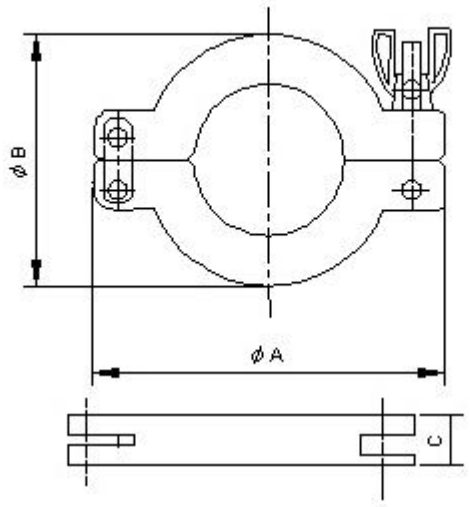


PART NO.	SIZE	A	B	C	D
014110020	3/4"	33.0	52.2	9.2	11.5
014110025	1"	43.0	68.8	9.2	9.5
014110038	1.1/2"	60.0	76.7	9.0	9.5
014110050	2"	77.8	99.6	9.32	11.0



stainless steel heavy dust KF clamp



Model No.	A	B	C
CL-N-16	61	45	18
CL-N-25	72	55	18
CL-N-40	90	70	18
CL-N-50	123	95	26

K001-NW CLAMPS-ALUMINUM

A	TUBE SIZE	STAINLESS STEEL
1.180	1/2	
1.180	3/4	
1.575	1	
2.160	1 1/2	
2.950	2	

K002-KF Bored flange

DIMENSIONS IN mm	A	B	TUBE SIZE	STAINLESS STEEL	PART NO.
ISO-KF	.510	.451	1/2		PSBB010
	.760	.680	3/4		PSBB016
• Bored for inch tube	1.010	.938	1		PSBB025
	1.510	1.438	1 1/2		PSBB040
	2.010	1.938	2		PSBB050
• To close off unused ports					

K003-KF Bored flange

A	B	C	D	STAINLESS STEEL	TUBE SIZE	PART NO.
1.180	.480	.510	.640		1/2	PSWS010
1.180	.680	.760	.798		3/4	PSWS016
1.575	.938	1.010	1.140		1	PSWS025
2.160	1.438	1.510	1.640		1 1/2	PSWS040
2.950	1.938	2.010	2.140		2	PSWS050

K004-weld flange

A	B	TUBE SIZE	STAINLESS STEEL	PART NO.
1.180	.480	1/2		PLWF010
1.180	.680	3/4		PLWF016
1.575	1.031	1		PLWF025
2.160	1.620	1 1/2		PLWF040
2.950	2.060	2		PLWF050

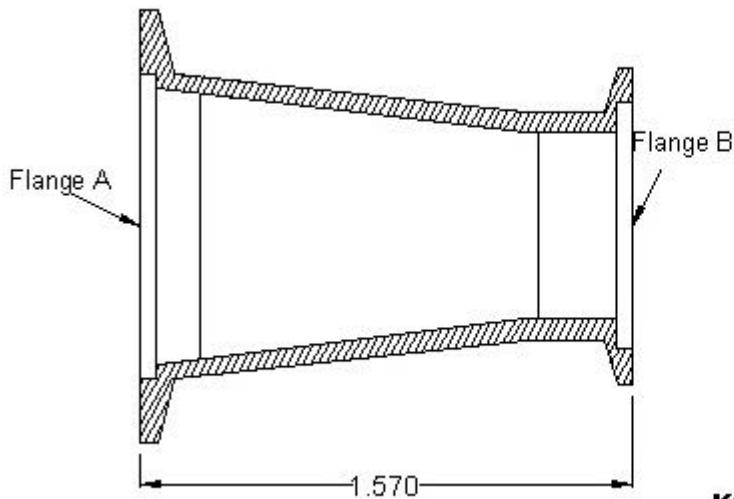
K005-LONG WELD FLANGE

DIMENSIONS IN mm	A	B	TUBE SIZE	STAINLESS STEEL	PART NO.
ISO-KF	1.180	.500	1/2		PSWF010
	1.180	.500	3/4		PSWF016
<ul style="list-style-type: none"> • BUTT WELD • INCH TUBE DIAMETER 	1.575	.500	1		PSWF025
	2.160	.750	1 1/2		PSWF040
	2.950	.750	2		PSWF050

K006-KF short weld flange

A	TUBE SIZE	STAINLESS STEEL
1.250	1/2	
1.150	3/4	
2.030	1	
2.400	1 1/2	
3.150	2	

K007-KF half ripple

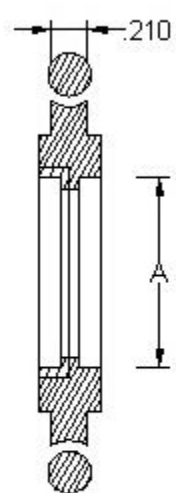


Flange Size	Flange A	Flange B	PART NO.
1 x 3/4	KF25	KF16	PAKK016025
1-1/2 x 3/4	KF40	KF16	PAKK016040
1-1/2 x 1	KF40	KF25	PAKK025040
2 x 3/4	KF50	KF16	PAKK016050
2 x 1	KF50	KF25	PAKK025050
2 x 1-1/2	KF50	KF40	PAKK040050

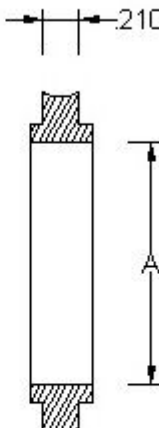
K008-KF concentric reducer, low profile

Flange SIZE	A	STAINLESS STEEL
1/2	.456	
3/4	.625	
1	.964	
1 1/2	1.560	
2	1.967	

K009-KF Centering Ring with viton

Flange SIZE	A	STAINLESS STEEL
3/4	.625	
1	.964	
1 1/2	1.560	
2	1.967	

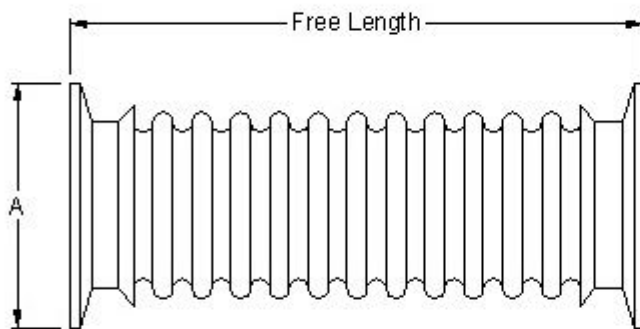
K010-KF meshed Centering Ring

Flange SIZE	A	STAINLESS STEEL
1/2	.456	
3/4	.625	
1	.964	
1 1/2	1.560	
2	1.967	

K011-KF Centering Ring

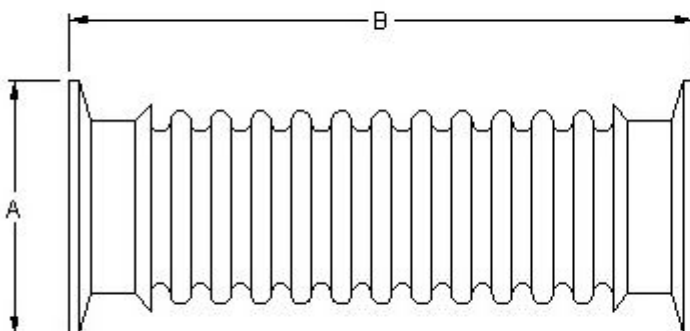
Flange SIZE	A	B	STAINLESS STEEL
1/2-3/4	1.250	1.186	
1	1.660	1.583	
1 1/2	2.250	2.169	
2	2.750	2.620	

K012-KF overpressure ring



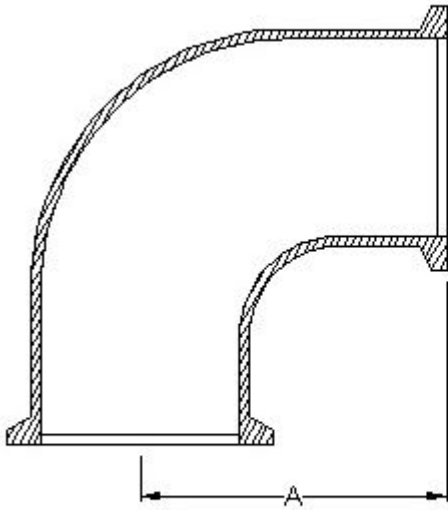
Flange SIZE	A	Free length
1/2	1.180	3.200
3/4	1.180	3.200
1	1.575	4.200
1 1/2	2.160	4.200
2	2.950	4.200

K013-KF flexible bellows



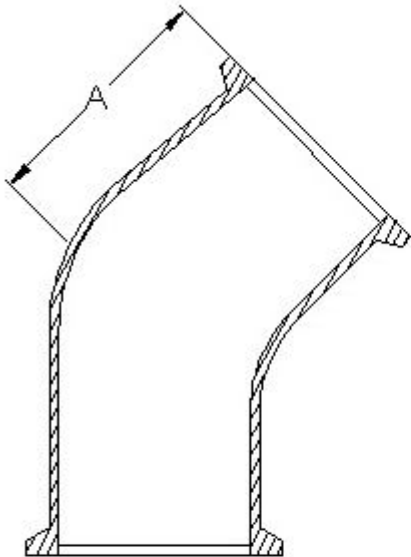
Flange SIZE	A	B
3/4	1.180	12
3/4	1.180	18
3/4	1.180	24
3/4	1.180	36
1	1.575	12
1	1.575	18
1	1.575	24
1	1.575	36
1-1/2	2.160	12
1-1/2	2.160	18
1-1/2	2.160	24
1-1/2	2.160	36
2	2.950	12
2	2.950	18
2	2.950	24
2	2.950	36

K014-KF flexible hose



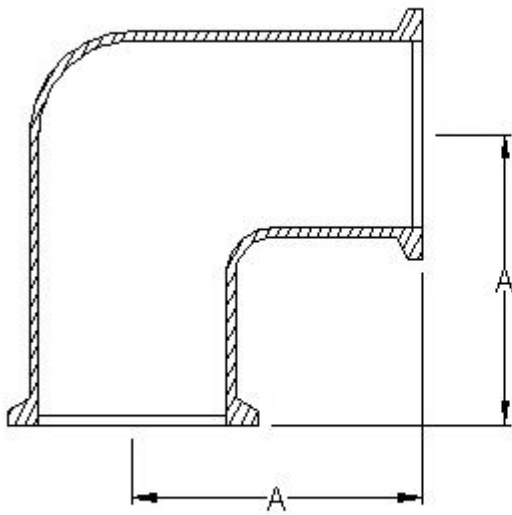
Flange SIZE	A	PART NO.
3/4	1.275	PCE90016
1	1.650	PCE90025
1 1/2	2.400	PCE90040
2	3.150	PCE90050

K015-KF 90° elbow



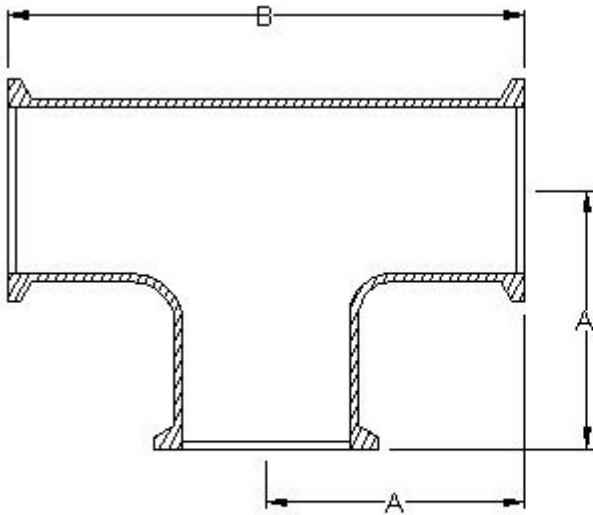
Flange SIZE	A	Part NO.
3/4	2.400	PCE45016
1	1.330	PCE45025
1 1/2	1.770	PCE45040
2	2.460	PCE45050

K016-KF 45° elbow with tangents



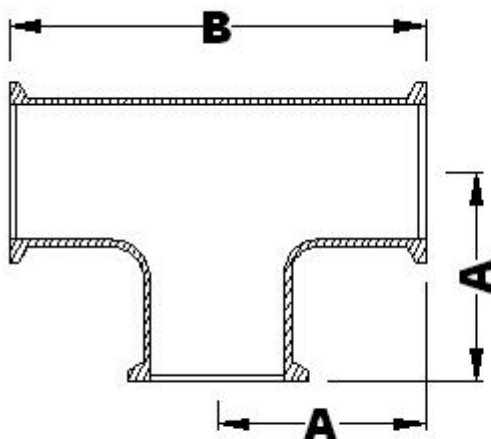
Flange SIZE	A
3/4	1.150
1	2.030
1 1/2	2.400
2	3.150

K017-KF 90° elbow mitered



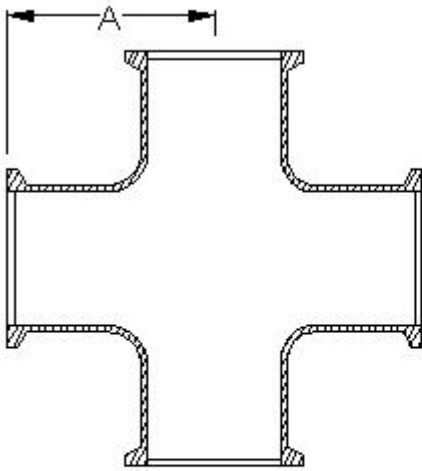
Flange SIZE	A	B	PART NO.
3/4	2.025	4.050	PTC016
1	2.025	4.050	PTC025
1 1/2	2.405	4.800	PTC040
2	3.150	6.300	PTC050

K018-KF TEE



Flange Size	A	B
1 X 3/4	2.275	4.050
1-1/2 X 3/4	2.400	4.800
1-1/2 X 1	2.525	4.800
2 X 1	2.525	6.300
2 X 1-1/2	2.650	6.300

K019-KF reducing tee

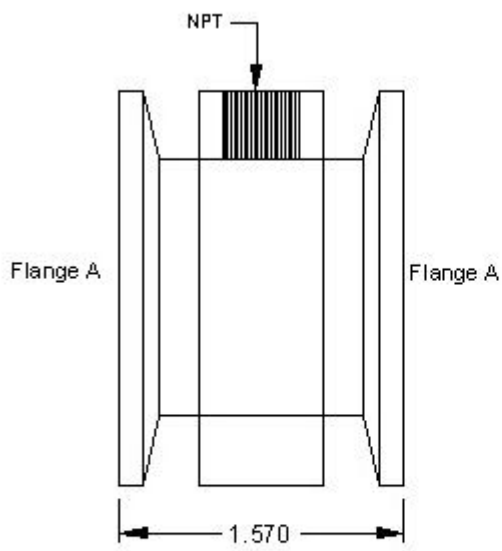


Flange Size	A	PART NO.
3/4	2.020	PSC 4012
1	2.020	PSC 4100
1-1/2	2.400	PSC 4112
2	3.150	PSC 4200

K020-KF 4-WAY CROSS

A	NPT	STAINLESS STEEL	SIZE
0.95	1/8		3/4
1.10	1/4		3/4
1.10	1/4		1
1.10	1/4		1 1/2
1.44	1/2		1 1/2
1.10	1/4		2
1.44	1/2		2

K021-KF-NPT female adapter



PART NO.	Flange A	FNPT
	KF 16	1/8
	KF 16	1/4
	KF 25	1/8
	KF 25	1/4
	KF 40	1/8
	KF 40	1/4
	KF 50	1/8
	KF 50	1/4

K022-KF gauge tee adapter